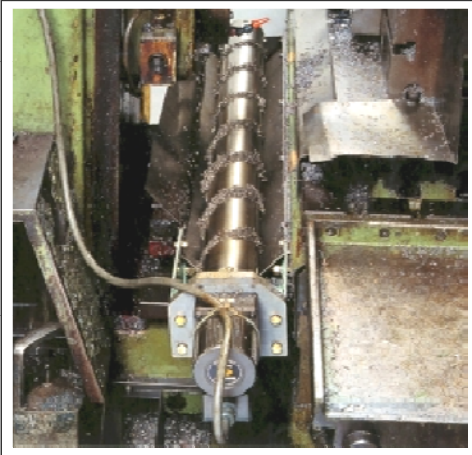


Helical Conveyor

C12-18(e)

Helical Conveyor

KKBH



Applications

- Carrying out magnetic chips and three-dimensional transfer of small magnetic parts from a machining center, a fraise, a gear cutter, a plano miller and etc.

Features

- <Maintenance-free>
There is no moving parts outside. This achieves safety and durability.
- <Compact Size>
This can install at the narrow space where ordinary conveyor system cannot fit in
- <Arbitrarily-specified Installation Angle>
Angle of the leveling pad and the mounting bracket (for without cullis) of conveyor tip are adjustable. This makes angled installation easier.
- Hishiko supplies the helical conveyor with cullis and without cullis. The model number of the helical conveyor with cullis includes "G".

Helical Conveyor with Speed Control Unit

KKBH-SC

KKHB-SC consists of KKBH and an inverter controller

Suitable for transporting small parts.

Applications

- For three-dimensional transporting of small parts in adequate speed tailored to each system.

Features

- Can set up appropriate transporting speed depending upon the parts.
- Can use in both 100V AC and 200V AC (single phase).
- <Maintenance-free>
There is no moving parts outside. This achieves safety and durability.
- <Compact Size>
This can install at the narrow space where ordinary conveyor system cannot fit in
- <Arbitrarily-specified Installation Angle>
Angle of the leveling pad and the mounting bracket (for without cullis) of conveyor tip are adjustable. This makes angled installation easier.
- Hishiko supplies the helical conveyor with cullis and without cullis. The model number of the helical conveyor with cullis includes "G".



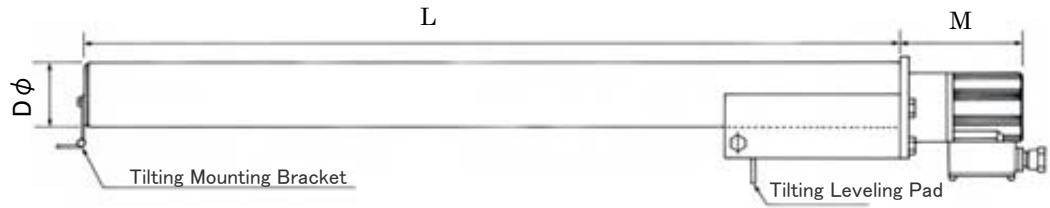
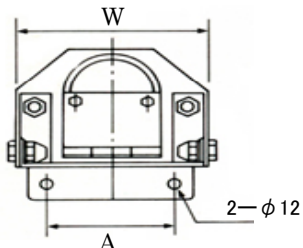
Example of Model: KKBH-1-12-SC

**You can Control Speed
at Will**

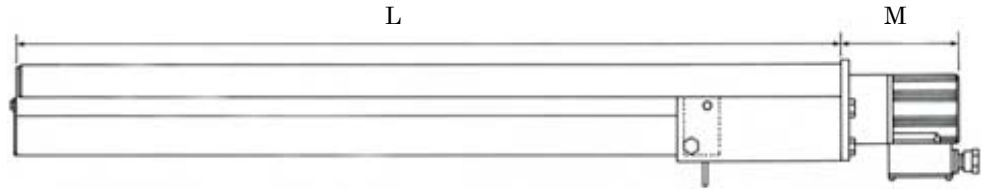
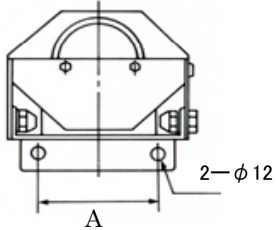
Helical Conveyor

KKBH

without Cullis



with Cullis



Specifications of KKBH

Stock No.	Model	D φ (mm)	L (mm)	M (mm)	W (mm)	A (mm)	Driving Motor	Processing Capacity
S963601	KKBH-1-8	φ 76.3	800	150	150	110	3 Phase 200V 25W	120 kg/h
S963602	KKBH-1-10		1000					
S963603	KKBH-1-12		1200					
S963604	KKBH-1-14		1400					
S963605	KKBH-1-16		1600					
S963606	KKBH-1-18		1800					
S963607	KKBH-1-20		2000					
S963608	KKBH-2-8	φ 101.6	800	162	190	150	3 Phase 200V 40W	230 kg/h
S963609	KKBH-2-10		1000					
S963610	KKBH-2-12		1200					
S963611	KKBH-2-14		1400					
S963612	KKBH-2-16		1600					
S963613	KKBH-2-18		1800					
S963614	KKBH-2-20		2000					
S963615	KKBH-2-22		2200					
S963616	KKBH-2-24		2400					
S963617	KKBH-2-26		2600					
S963618	KKBH-2-28		2800					
S963619	KKBH-2-30		3000					

Example of Model

i.e. : without cullis KKBH-1-12

i.e. : with cullis KKBH-1G-12

- ※Both models come with 3 meters 4 core cable.
- ※Hishiko does not do wiring.
- ※Hishiko can prepare custom length pipe as well as standard length.

Attention:

- ※The processing capacity may change according to the type of chips and cutting fluid.
- ※If installation angle is more than 60 degrees, chips or parts may not drop properly. Please ask our sales personnel before purchase.
- ※The chips or parts whose length more than 60 mm may not transfer properly.
- ※This product cannot transfer viscous things like sludge

The content of this is current as of October 2012



International Trading Department

3-13-1 Hongo, Bunkyo-ku, Tokyo 113-0033 Japan
Tel: +81-3-5800-6656 Fax: +81-3-5800-6657 Mail: kokusaibu@hishiko.co.jp

Tokyo Office

3-13-1 Hongo, Bunkyo-ku, Tokyo 113-0033 Japan
Tel: +81-3-5800-6655 Fax: +81-3-5800-6658 Mail: tokyo@hishiko.co.jp

Osaka Office

2-4-15, Chuo, Jyoto-ku, Osaka city, Osaka 586-0005 Japan
Tel: +81-6-6939-2043 Fax: +81-6-6939-7910 Mail: osaka@hishiko.co.jp

Nagoya Office

12-9 Ushimaki town, Mizuho-ku, Nagoya city, Aichi 467-0863 Japan
Tel: +81-52-883-3031 Fax: +81-52-883-5345 Mail: chuubu@hishiko.co.jp

Special Welding Consumables Department

3-13-1 Hongo, Bunkyo-ku, Tokyo 113-0033 Japan
Tel: +81-3-5800-6656 Fax: +81-3-5800-6657 Mail: welding@hishiko.co.jp

Kawagoe Factory

2-8-9 Yoshinodai, Kawagoe-city, Saitama 350-0833 Japan
Tel: +81-49-223-1701 Fax: +81-49-223-1901



Head Quoter

3-13-1 Hongo, Bunkyo-ku, Tokyo 113-0033 Japan
Tel: +81-3-5800-6655 Fax: +81-3-5805-6931

<http://www.hishiko.co.jp>

Sales Agent

* Due to constant improvements, the specification in this text is subject to change without prior notice.